



ARCHITECTS OF INTELLIGENT INFRASTRUCTURE

AMIS

INCIDENT INTELLIGENCE — OPERATIONAL VISIBILITY — RISK ANALYTICS — DECISION ASSURANCE — GOVERNANCE & OVERSIGHT

INFO@APEXIAR.CO.UK
WWW.APEXIAR.CO.UK

ANALYTICAL MANAGEMENT INCIDENT SYSTEM

Operational certainty depends on continuous, reliable intelligence



Why It Matters

Without structured intelligence, organisations operate reactively.

- Fragmented data leads to delayed or inconsistent decisions
- Leaders rely on hindsight and manual interpretation
- Emerging risks are identified after escalation
- Governance confidence weakens under scrutiny

AMIS replaces reactive response with proactive, auditable control.

How AMIS Changes Decision-Making

When incident data is fragmented, decisions are delayed, inconsistent, or difficult to defend.

AMIS ingests and analyses operational data in near real time — transforming raw information into structured, actionable intelligence.

- Consolidates incident and operational data across teams
- Surfaces emerging risks, anomalies, and intervention priorities
- Connects forecasting and contextual factors to live decisions
- Presents evidence suitable for executive and regulatory scrutiny

What AMIS Delivers

AMIS converts fragmented incident and operational data into a single, decision-ready view of risk and performance.

- Unified visibility across teams, locations, and timeframes
- Predictive analytics and contextual forecasting to identify emerging risks earlier
- AI-assisted planning insight grounded in live operational data
- Executive-ready intelligence aligned with governance and oversight

Without AMIS: Decisions rely on fragmented data and retrospective explanation
With AMIS: Decisions are predictive, evidence-led, and defensible

APEXIAR PORTAL (AMIS)

Operational insight without analyst dependency



Overview

Operational intelligence without analyst dependency.

AMIS provides a unified operational platform for insight, analysis, and decision support – replacing fragmented tools, manual interpretation, and retrospective reporting.

Designed for complex and regulated environments, AMIS enables leaders to monitor risk, anticipate emerging issues, and act with confidence using timely, structured intelligence.

Core Functionality

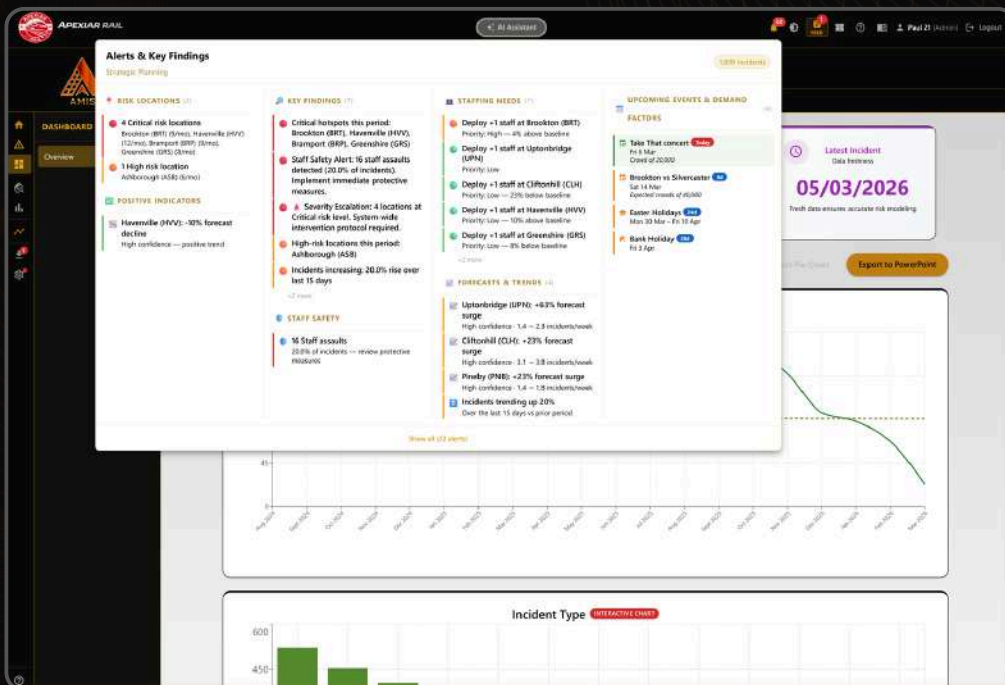
What leaders use to maintain operational control:

- Real-time intelligence from multiple data sources including PDF, Excel, and CSV
- Automated analytics and configurable reporting that reduce manual interpretation
- Integrated incident reporting and analysis with organisation-wide visibility
- Forward-looking insights with clear recommendations and measurable outcomes

Advanced Capabilities

Built for scale, complexity, and scrutiny:

- Predictive analytics supporting short-term forecasting and scenario planning
- AI-assisted operational insight grounded in live organisational data
- Contextual forecasting incorporating events, bank holidays, and school holidays
- API-enabled integration with external systems and authoritative data sources



OPERATIONAL CHALLENGES THAT LIMIT CONTROL AT SCALE

The structural risks created by fragmented data, inconsistent processes, and reactive oversight



Operating at Scale Creates Structural Challenges

Large organisations and public-sector bodies operate across complex environments, multiple systems, and diverse teams.

As scale increases, visibility, consistency, and timely decision-making become harder to maintain, exposing organisations to increased operational, reputational, and regulatory risk.

Fragmented Data and Limited Visibility

Operational information is distributed across multiple systems and formats, making it difficult to maintain a single, accurate view of performance.

- Data held in disconnected systems and formats
- Inconsistent reporting and interpretation of the data
- Limited real-time visibility across operations

Reactive Decision-Making

Without timely, reliable insight, issues are often addressed only after escalation, incident, or external scrutiny, increasing risk and operational impact.

- Delayed identification of emerging issues
- Decisions based on incomplete or outdated information
- Limited ability to anticipate trends or outcomes

Managing Risk in Complex Environments

Operational risk increases as systems, assets, and activities become more interconnected, making effective oversight and prioritisation more difficult.

- Difficulty identifying patterns and recurring issues
- Limited predictive insight into future risk
- Challenges measuring the effectiveness of interventions

Inconsistent Processes and Oversight

As organisations grow, maintaining consistent standards and governance across teams becomes increasingly difficult.

- Limited auditability and traceability of decisions
- Variations in how incidents are recorded and analysed
- Difficulty enforcing consistent controls and processes

AMIS — INSIDE THE PORTAL

How insight, action, and monitoring come together in a single operational view



Supporting the Operational Decision Cycle

AMIS is designed to support the full decision lifecycle — from situational awareness to action and ongoing monitoring.



Real-Time Insight

Live dashboards provide immediate visibility of trends, hotspots, and emerging risks across operations. Users can explore patterns across time, location, and incident category to understand what is happening now and where attention is required.

Integrated Reporting and Data Capture

AMIS can connect directly to reporting applications, enabling incidents, observations, and operational data to be captured at source and immediately reflected within the portal. This ensures decision-makers are working from current, structured information while maintaining a clear, auditable link between frontline reporting and executive oversight.

Data-Led Action Plans

Embedded analytics translate operational insight into prioritised, evidence-based actions. Recommendations are supported by clear rationale, expected outcomes, and measurable performance indicators, enabling confident and accountable decision-making.

Ongoing Monitoring

Interactive dashboards track intervention performance and evolving risk over time. This enables organisations to measure outcomes, adjust responses, and maintain operational oversight as conditions change.

INTELLIGENCE BEGINS AT REPORTING

Ensuring operational intelligence begins at the point of reporting



Structured reporting that ensures operational visibility begins at source

Operational control begins with reliable, timely information.

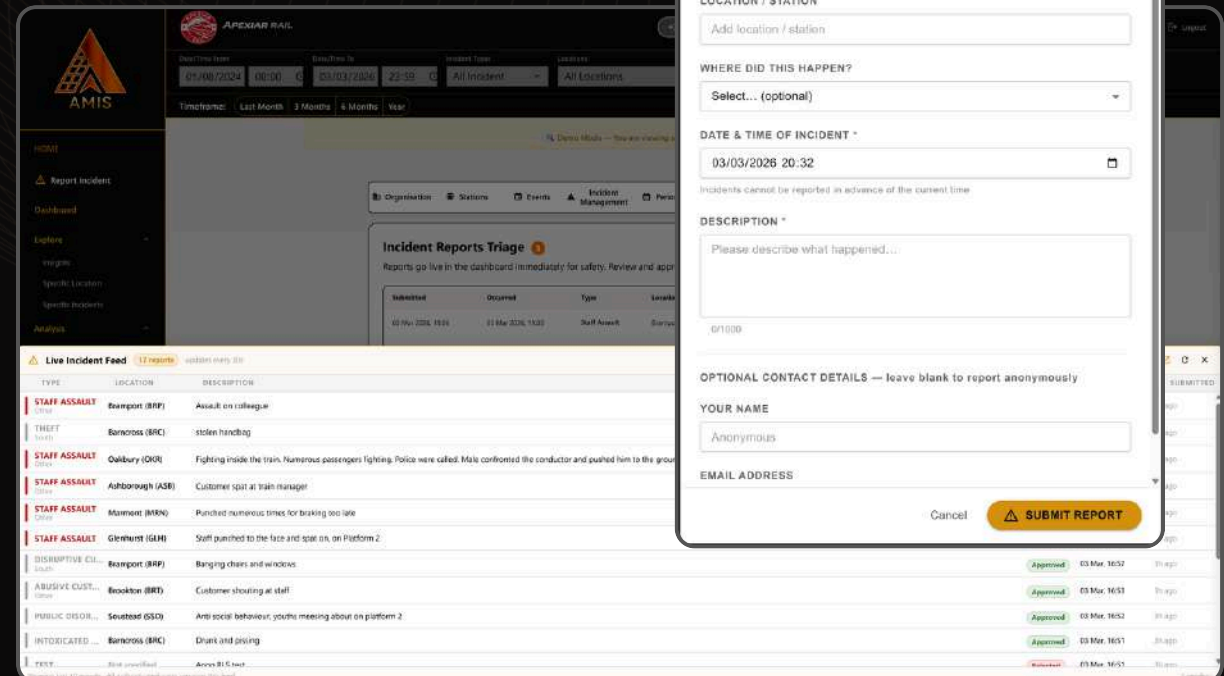
AMIS includes an integrated reporting application that captures incidents, observations, and operational activity directly at source — ensuring data is structured, consistent, and immediately available for analysis and oversight.

By embedding governance at the point of entry, organisations improve data integrity, reduce reporting delays, and maintain a clear, auditable link between frontline activity and executive decision-making.

Built for disciplined, auditable reporting

- Secure, mobile-enabled capture aligned to organisational frameworks
- Standardised inputs to improve consistency and reduce interpretation risk
- Immediate integration with AMIS for real-time visibility across teams
- Full traceability from report submission through to action and review

This establishes a trusted foundation for consistent, defensible decision-making across the organisation.



AMIS — PREDICTIVE & PREVENTATIVE INTELLIGENCE

Anticipating risk early – with transparency, confidence, and control



Predictive Analytics & Forecasting

AMIS applies predictive analytics to identify emerging risk, forecast short-term trends and support scenario planning before escalation.

Risk Analysis & Pattern Detection

Embedded analytical models surface recurring patterns, anomalies, and correlations that would be difficult to identify manually, while remaining transparent and reviewable.

Structured Risk Reduction Plans

AMIS supports structured, repeatable risk controls by aligning recommendations, operational actions, and oversight in a single system

Predictive Analytics & Forecasting

TIMEFRAME SELECTION WILL NOT HAVE AN EFFECT ON THIS DATA

Using Full Historical Dataset
This forecast analyses your complete historical dataset (1825 incidents over 83 weeks) to maximise prediction accuracy. The date, time, location, and type filters you set above do not apply to this section-forecasting performs best with comprehensive training data.

4-Week Forecast (Future Projection)

17.8 <small>Week +1</small>	17.7 <small>Week +2</small>	17.7 <small>Week +3</small>	17.7 <small>Week +4</small>
---------------------------------------	---------------------------------------	---------------------------------------	---------------------------------------

Method: Network wide; full; winters no seasonal | 95% CI +/- 5
Forecast uses complete historical dataset (1825 incidents, 83 weeks) for maximum accuracy, independent of filters above.

Statistical Reliability

High

Expected Change
Stable 4.3%
(Future Forecast vs Actual)

What this is
A short-term demand forecast for incidents over the next four weeks. Use it to plan staffing and schedules.

How to read it

- Week +1 / +2 / +3 / +4: Expected incident count for each upcoming week.
- Statistical Reliability: Quality of data for forecasting (High = 52+ weeks with YoY comparison, Medium = 10-51 weeks, Low = +1-2 weeks); none decreases capped at Medium for clarity.
- 95% Confidence Interval (+/-): The possible swing around each number. Wider bands mean lower certainty.

Act on timing

- Week +1 → immediate recurring decisions (next week's roster, staffing, supplies)
- Weeks +2 to +4 → short-term planning (leave approvals, training schedules, procurement)

Use the Reliability card

- High Reliability / Increase → 32+ weeks data enables accurate resource planning with seasonal awareness.
- Medium Confidence / Decrease → Safety cap applied - maintain vigilance even with strong data to prevent complacency.

Buffer for uncertainty

- If the confidence interval is large, add contingency with on-call or unused trained teams.

If the chart looks flat or jumpy

- Widen the date range or relax filters to stabilise the signal. Then press Regenerate.

Predictive Recommendations

- Maintain current monitoring and response protocols.
- Focus on continuous improvement and prevention.

Locations at Risk (Filtered Period Analysis)

FILTERED VIEW - Investigation Mode
This section displays incidents within your selected timeframe only - anything between 1 month, 3 months, 6 months, or anything else that you set above.

Risking-Adjusted Risk Analysis
Risk scores are normalised by passenger volume to ensure fair comparison across stations. Locations are ranked by incident incidence counts. The percent high-traffic stations from appearing artificially high-risk simply due to higher passenger volume.

<p>Clifton Hill (CLH)</p> <p>17 total incidents</p> <p>10.0% of all incidents</p> <p>23 incidents per month</p> <p>Critical</p>	<p>Uptonbridge (UPN)</p> <p>7 total incidents</p> <p>14.3% of all incidents</p> <p>11 incidents per month</p> <p>Critical</p>	<p>Silvercater (SLC)</p> <p>5 total incidents</p> <p>7% of all incidents</p> <p>8 incidents per month</p> <p>Critical</p>
<p>Benfield (ELL)</p> <p>3 total incidents</p> <p>6.3% of all incidents</p> <p>7 incidents per month</p> <p>High</p>	<p>Springmorton (SPM)</p> <p>5 total incidents</p> <p>5.7% of all incidents</p> <p>6 incidents per month</p> <p>High</p>	<p>Chestendale (CHD)</p> <p>2 total incidents</p> <p>3.6% of all incidents</p> <p>4 incidents per month</p> <p>Medium</p>

Executive Summary

TIMEFRAME SELECTION WILL HAVE AN EFFECT ON THIS DATA

80
Total Incidents

15
Staff Assaults

Historical Trend
+48%
(Period vs Previous)
Forecast period split into two phases (1st vs 2nd days) to ensure change reflects station evolution.

32
Anti-Social Incidents

17.6%
vs Last Year (48 incidents)

18.7
Weekly Average

Tuesday
Peak Day

16:00
Peak Hour

Staffing | **Health**
Parade Split

Alerts & Key Findings
1,823 incidents analysed - Strategic Planning

RISK LOCATIONS

- 4 Critical risk locations: Beckton (BRT), Havernhill (HVV), Brampton (BRP), Greenhills (GRS)
- 1 High risk location: Ashburough (ASB)

POSITIVE INDICATORS

- Havernhill (HVV): -60% forecast decline. High confidence - positive trend.

KEY FINDINGS

- Critical hotspots this period: Beckton (BRT), Havernhill (HVV), Brampton (BRP), Greenhills (GRS)
- Staff Safety Alert: 15 staff assaults detected (18.8% of incidents). Implement immediate protective measures.
- Severity Escalation: 4 locations at Critical risk level. System-wide intervention protocol required.
- High-risk locations this period: Ashburough (ASB)
- Incidents increasing: 47.5% rise over last 15 days
- High severity pattern: 16:00 hour shows 330% above-average incidents. Staffing optimisation needed.
- Medium-risk locations this period: Bancroft (MPC), Kingsbury (KNS), Maresfield (MNF), Westwood (WST), Uptonbridge (UPN), Cambridge (CAM), Silvercater (SLC), Wakeok (WAK), Dalmeida (DLY), Glenhurst (GLH)

STAFF SAFETY

- 15 Staff assaults
- 0.8% of incidents → review protective measures

STAFFING NEEDS

- Deploy +1 staff at Beckton (BRT)
Priority: High → 4% above baseline
- Deploy +1 staff at Uptonbridge (UPN)
Priority: Low
- Deploy +1 staff at Greenhills (GRS)
Priority: Low → 8% below baseline
- Deploy +1 staff at Clifton Hill (CLH)
Priority: Low → 21% below baseline
- Deploy +1 staff at Havernhill (HVV)
Priority: Low → 10% above baseline
- Deploy +1 staff at Brampton (BRP)
Priority: Low → 21% above baseline
- Deploy +1 staff at Silvercater (SLC)
Priority: Low → 1% above baseline

UPCOMING EVENTS & DEMAND PEAKS

THIS WEEK

- Take That concert: High Low
- Feb 14 Mar
- Crowd of 20,000

COMING UP (6-24 DAYS)

- Beckton vs Silvercater: High Medium
- Sat 14 Mar
- Expected crowd of 40,000

Easter Holiday: High Medium

Mon 20 Mar - Thu 16 Apr

INTELLIGENT PLANNING & OPERATIONAL CONTEXT

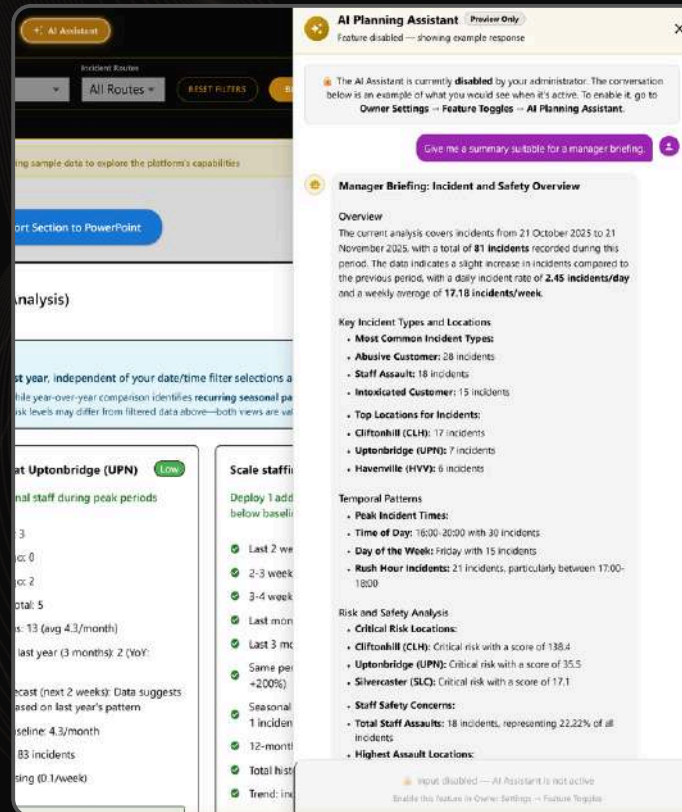
Turning live data and real-world events into proactive operational control



AI Planning Assistant

AMIS includes an integrated AI Planning Assistant that allows leaders to interrogate live operational data through a secure conversational interface and receive structured, data-grounded responses in real time.

- Answers are based on live organisational data — incidents, risk scores, trends, and forecasts
- Quick or Detailed response modes to match decision context
- Suggested prompts enable immediate value
- Interactions are authenticated, rate-controlled, and logged



Events, Bank Holidays & School Holidays

Incident demand shifts around public holidays, school terms, and major events. AMIS embeds this operational context directly into forecasting and planning.

Administrators can configure known events, UK bank holidays, and Welsh school holiday periods — each assigned a severity rating that adjusts forecast demand.

By making real-world context explicit, AMIS enables more accurate staffing decisions, earlier preparation for high-risk dates, and reduced reactive response.

Without AMIS: Risk is understood after incidents occur

With AMIS: Risk is anticipated through real-time intelligence and predictive insight

WHAT ORGANISATIONS GAIN WITH AMIS

Operational control, governance confidence, and measurable value



Operational Impact

AMIS enables organisations to improve situational awareness, reduce response times, and prioritise interventions based on real-time and forward-looking insight.

- Reduced reliance on reactive, post-incident decision-making
- Improved operational consistency across teams
- Clear, early visibility of emerging and recurring risk across operations

People, Trust and Governance

AMIS supports transparent, auditable decision-making, strengthening trust between leadership, operational teams, and stakeholders.

- Consistent decision frameworks across teams
- Improved confidence in data-led decisions
- Clear accountability and governance oversight

Strategic & Commercial Value

By automating analysis and standardising insight, AMIS reduces manual reporting effort and supports more efficient deployment of operational resources.

- Reduced cost of manual analysis and reporting
- More effective allocation of staff and assets
- Executive-ready reporting with minimal overhead

Without AMIS: Organisations rely on fragmented reporting, reactive decisions, and inconsistent operational oversight

With AMIS: Leaders operate with real-time intelligence, structured governance, and confident, evidence-led decision-making

DATA PROTECTION & SECURITY

Built for regulated environments and operational trust



Compliance & Governance

Apexiar platforms are designed to operate confidently in regulated environments, with compliance, auditability, and data protection embedded across workflows.

- GDPR-aligned data handling and retention
- Audit-ready reporting and decision traceability
- Support for regulated operational environments
- Clear data ownership, access accountability, and decision traceability

Security by Design

Security is embedded at every layer of the platform architecture, supporting privacy, resilience, and controlled access to sensitive operational data.

- Role-based access control
- Secure data segregation to prevent cross-system or cross-team exposure
- Continuous security updates and monitoring to reduce exposure to emerging threats
- Zero-trust architectural principles applied across the platform

Operational Resilience & Assurance

Apexiar platforms are built to support continuous, reliable operation in critical environments where data integrity, availability, and accountability are essential.

- Resilient system architecture with controlled failure modes
- Continuous monitoring of platform health and data integrity
- Clear ownership and escalation paths for operational issues
- Designed to support incident response and post-incident review

Without AMIS: Operational data and security controls are fragmented across systems, limiting oversight and accountability
With AMIS: Security, governance, and operational data are unified under a controlled, auditable platform



ARCHITECTS OF INTELLIGENT INFRASTRUCTURE

AMIS is designed for organisations operating in complex, high-risk and regulated environments where operational visibility, decision assurance, and governance discipline matter.

By combining continuous insight, structured analysis, and integrated reporting, AMIS transforms fragmented operational data into a clear, trusted picture of performance, risk, and emerging issues.

This enables earlier intervention, reduces reliance on reactive decision-making, and strengthens confidence that operational controls are effective and defensible under scrutiny.

Built to scale.

Designed for governance.

Focused on operational certainty – with measurable impact.

